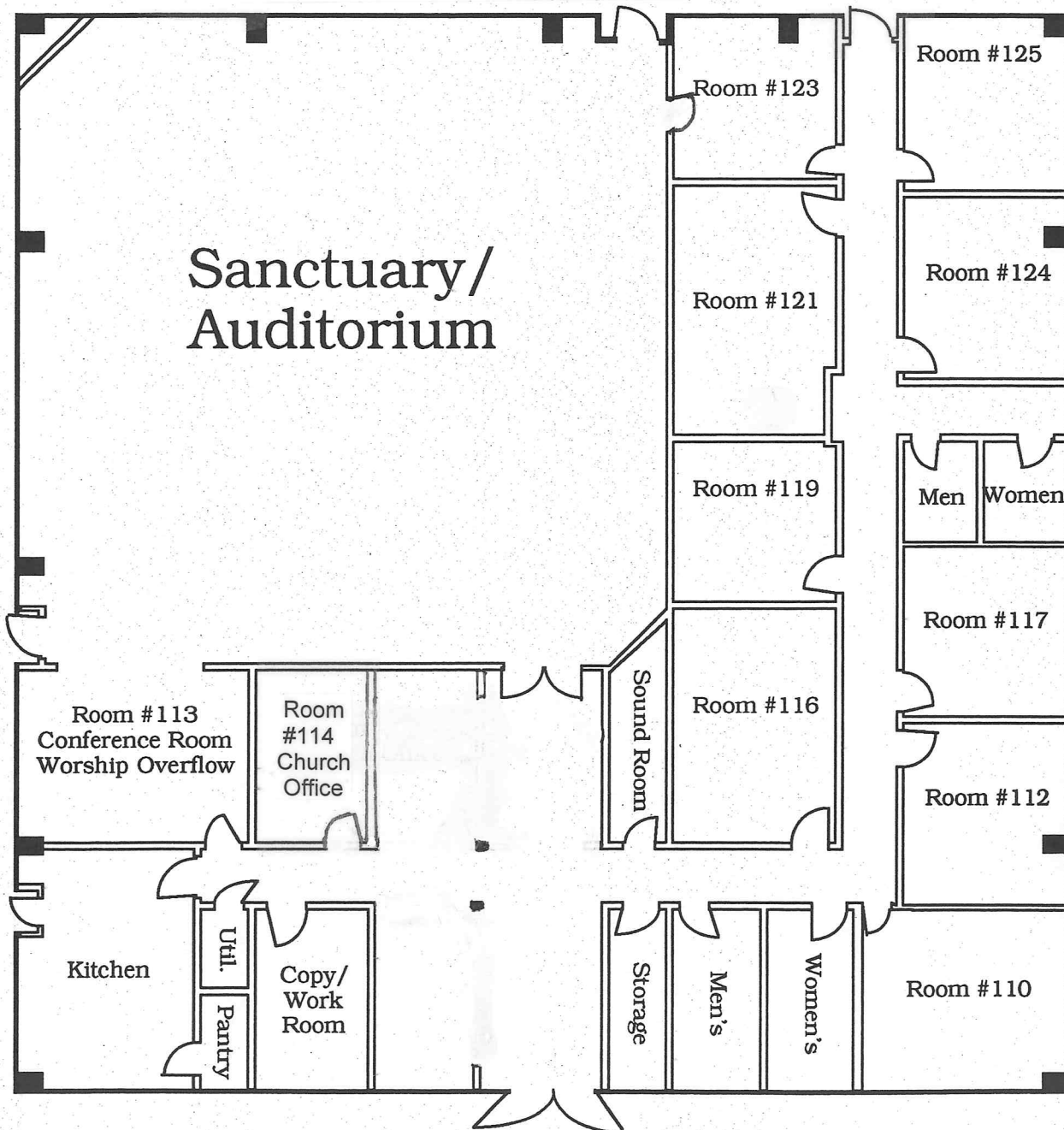


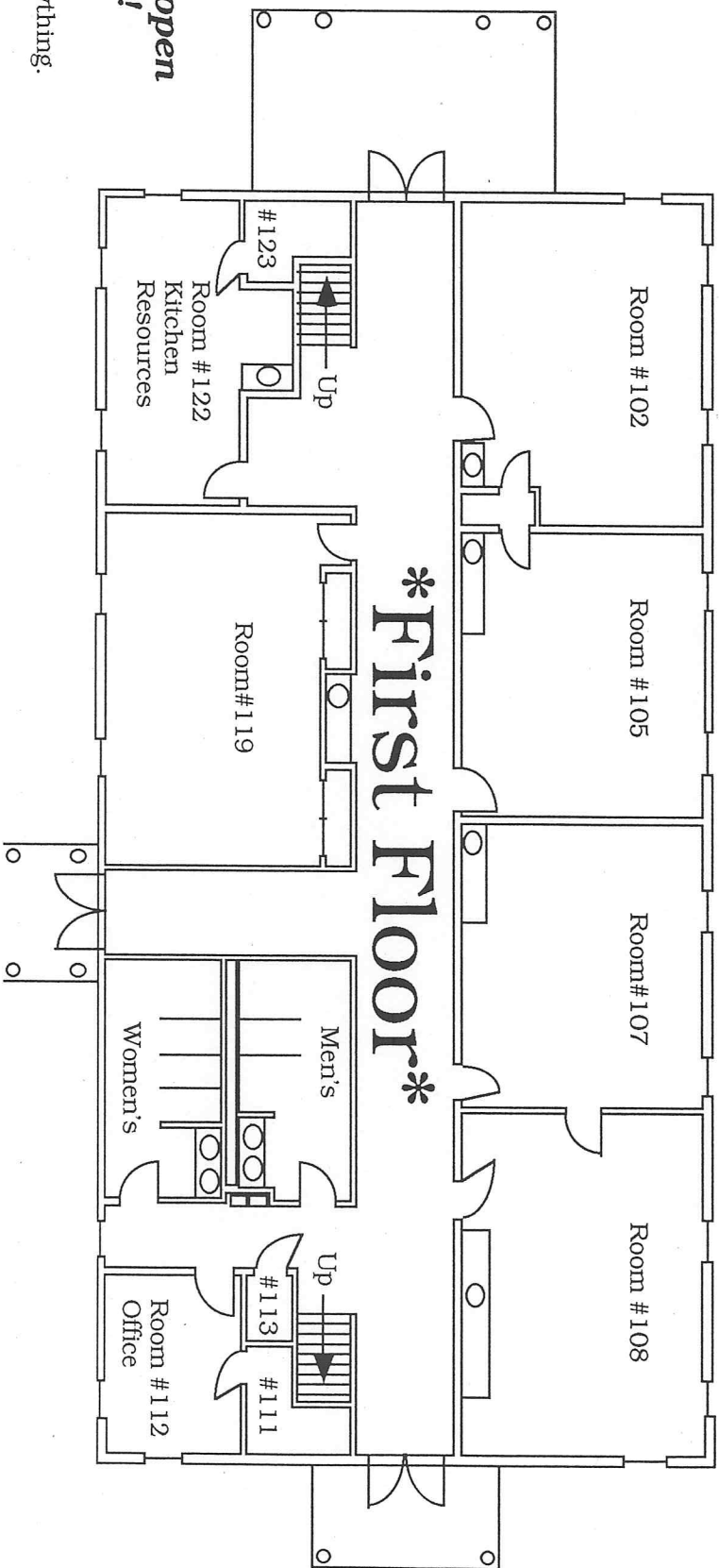
Floor/Classroom Diagram
for the
Worship Center
Clear Lake Bible Church

1st Hour -
9:00 A.M. - 10:20 A.M.
2nd Hour -
10:40 A.M. - 12:00 Noon



10/6/05

Key Plan: Clear Lake Bible Church



Note: All keys to open up outside doors!!!

Key "C - GM":
Grand Master - opens everything.

Key "C - 2":
Opens all 1st floor doors (except room #112 - office). Also opens room #208 - storage.

Key "C - 3":
Opens all 2nd floor doors except - room #202 - Youth room. Also opens room #122 and room #113.

Key "C - 4":
Same as Key (3) but also opens room #202 - Youth room.

Key "C - 5":
Opens room #112 - office.

